

The Ideal Dewatering Solution for Fly Ash, Bottom Ash, and Coal Sludge.

Geotube® technology is a simple, cost-effective dewatering system. It can convert waste products like fly ash and bottom ash into potential profit centers through cost efficient recovery.

- Ideal for lagoon and tank cleanouts, mine tailings, fly ash, oil ash, bottom ash, coal tailings, and other applications.
- Dewatering and containment in one operation. No secondary handling.
- Over 90% solids removal.
- Can be used seasonally, with solids safely stored onsite between uses.
- Solids can be disposed of in a landfill.
- Works even with fine-grained sediments.
- Effluent can often be discharged without additional treatment.
- Numerous sizes available. Geotube® units can even be stacked to save space.
- Fly ash is contained, eliminating concerns associated with airborne pollutants.



Lagoon cleanup can be a problem and a liability. Geotube® technology simplifies the dewatering process.



Geotube® units can be custom sized to fit your space requirements.

3680 Mount Olive Road • Commerce, GA 30529
TENCATE™

TENCATE Geotube® High Volume, Low Cost Dewatering For Power and Mining Industries



TENCATE™
materials that make a difference

For Large or Small Dewatering Requirements, TenCate Geotube® Technology Works.

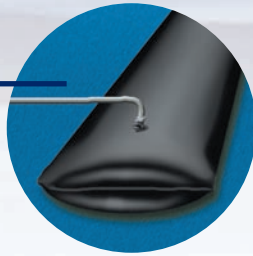
TenCate™'s Geotube® technology can be used to dewater millions of gallons of sludge per day, or take care of smaller dewatering needs. It's versatile, inexpensive, and very efficient.

How Geotube® Technology Works

Dewatering with Geotube® technology is a three-step process.

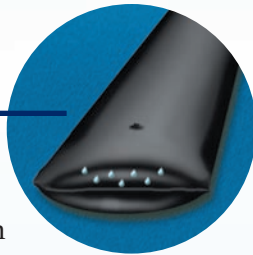
1. Filling

Sludge is pumped into the Geotube® unit. Low-cost environmentally-safe polymers are added to the sludge, which makes the solids bind together and water separate.



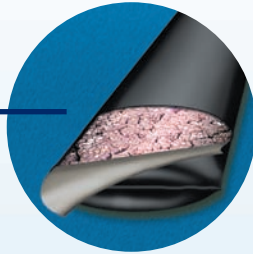
2. Dewatering

Clear effluent water simply drains from the Geotube® unit. Water quality may be good enough to return to waterways without additional treatment.

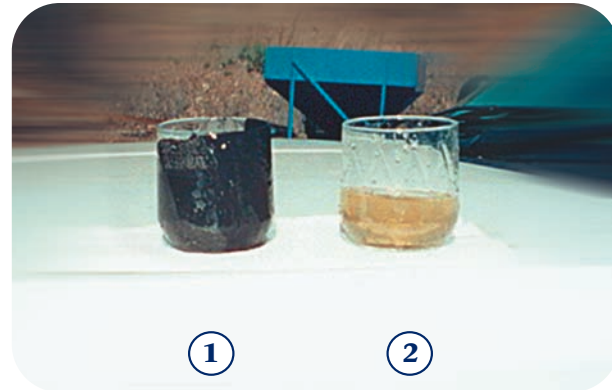


3. Consolidation

Solids remain in the bag. Volume reduction can be more than 90%. When full, the Geotube® unit and contents can be deposited at a landfill.



You can even set up a Geotube® unit inline, so you prevent solids from entering a lagoon. The system doesn't interrupt other operations. And it's very cost efficient.



Geotube® Technology in Action:

Raw sludge before treatment (1), and the clear effluent (2) after dewatering through a Geotube® unit.



Geotube® units dewater fly ash, bottom ash, and coal sludge onsite; then stores solids until you need them.

The Simplest High Volume Dewatering System Ever

There are no belts or gears. Geotube® units are available in a variety of sizes, depending on your volume and space requirements. Geotube® units can be stacked to maximize your available footprint or can be fabricated to fit in mobile roll-off containers that can be transported around your property as necessary.

Learn More Today

Visit our website at www.geotube.com. You'll find case studies, technical information, literature, news, and other features.

And you can always get your questions answered by calling **toll-free 888-795-0808**.



Solids can be collected and sold. Geotube® dewatering technology can create a valuable profit center.



Know in Minutes if Geotube® Technology Can Work for You.

A **Rapid Dewatering Test** can tell you quickly. It tests a small sample of your waste material to see how well it dewateres. You'll know in a matter of minutes. For a more comprehensive analysis, our **Hanging Bag Test** evaluates 20 to 40 gallons of waste material, and allows you to accurately estimate effluent quality and dewatering rates.

Call your TenCate™ representative today for an evaluation of your material, call toll-free 888-795-0808, or visit www.geotube.com.



3680 Mount Olive Rd • Commerce, GA 30529
Phone: 706.693.1897 • Toll Free: 888.795.0808
Fax: 706.693.1896 • www.geotube.com